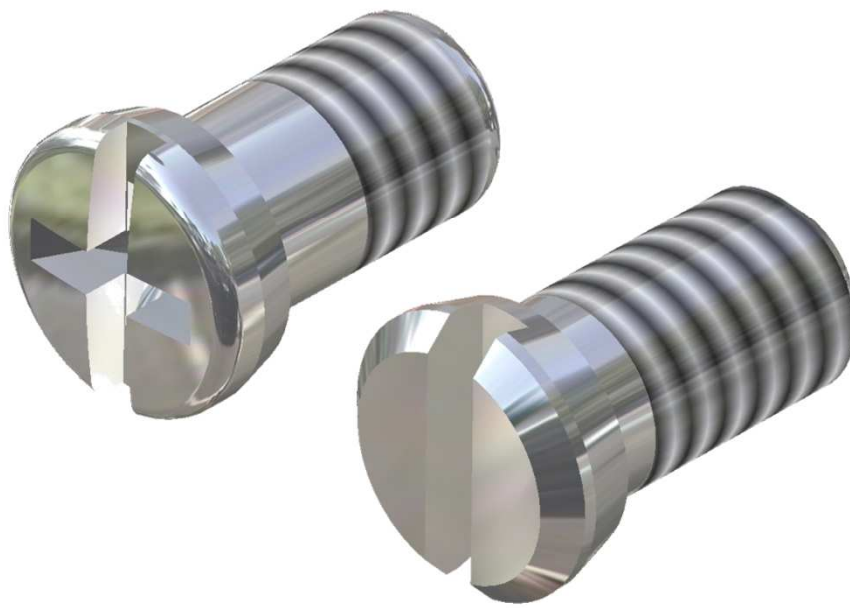


# Conical head

SCREWS

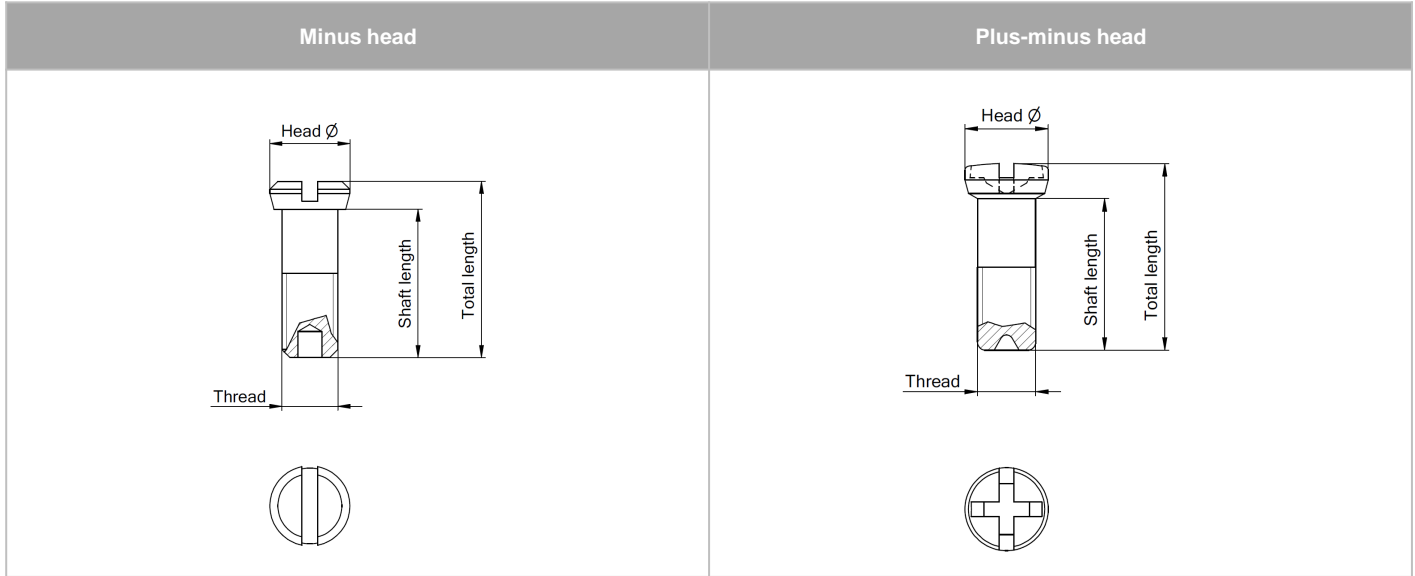
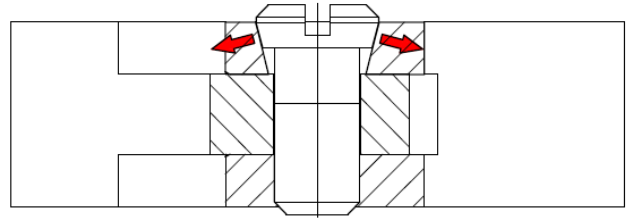


ACCESSORIES

# Conical head

## SCREWS

- Loss protection system
- Over-tightening of the screw is nearly impossible
- Thread protection thanks to optimal force distribution
- Enable an equal, easy and precise movement of the hinge
- Made from stainless steel
- Only to use with OBE's conical head hinges
- Available threads: M1.2, M1.4, M1.6
- Patented system



| Minus head                    |        |              |              |        |
|-------------------------------|--------|--------------|--------------|--------|
| Art. No.                      | Thread | Total length | Shaft length | Head Ø |
| 99-02550                      | M1.2   | 2.4          | 1.9          | 1.8    |
| 99-02530                      | M1.4   | 2.3          | 1.8          | 2.0    |
| 99-02506                      | M1.4   | 2.6          | 1.9          | 2.0    |
| 99-02525                      | M1.4   | 2.9          | 2.2          | 2.0    |
| 99-02507<br>Thread length 1.3 | M1.4   | 3.2          | 2.5          | 2.0    |
| 99-02500<br>Thread length 1.6 | M1.4   | 3.2          | 2.5          | 2.0    |
| 99-02501                      | M1.4   | 3.4          | 2.7          | 2.0    |
| 99-02524                      | M1.4   | 3.7          | 3.0          | 2.0    |
| 99-02502                      | M1.4   | 3.9          | 3.2          | 2.0    |
| 99-02503                      | M1.4   | 4.4          | 3.7          | 2.0    |
| 99-02511                      | M1.6   | 3.5          | 2.7          | 2.5    |

| Plus-minus head               |        |              |              |        |
|-------------------------------|--------|--------------|--------------|--------|
| Art. No.                      | Thread | Total length | Shaft length | Head Ø |
| 99-01803                      | M1.4   | 2.4          | 1.7          | 2.0    |
| 99-01810                      | M1.4   | 2.7          | 1.9          | 2.0    |
| 99-01811                      | M1.4   | 3.0          | 2.2          | 2.0    |
| 99-01812                      | M1.4   | 3.3          | 2.4          | 2.0    |
| 99-01813<br>Thread length 1.4 | M1.4   | 3.5          | 2.7          | 2.0    |
| 99-01815<br>Thread length 1.9 | M1.4   | 3.5          | 2.7          | 2.0    |
| 99-01814                      | M1.4   | 3.8          | 3.0          | 2.0    |
| 99-01817                      | M1.4   | 4.0          | 3.2          | 2.0    |
| 99-01818                      | M1.4   | 4.2          | 3.4          | 2.0    |
| 99-01816                      | M1.4   | 4.5          | 3.7          | 2.0    |

