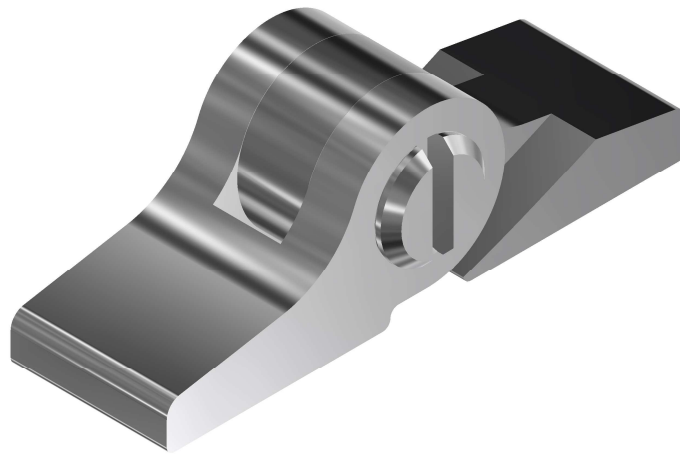


Stainless Steel

REGULAR HINGES

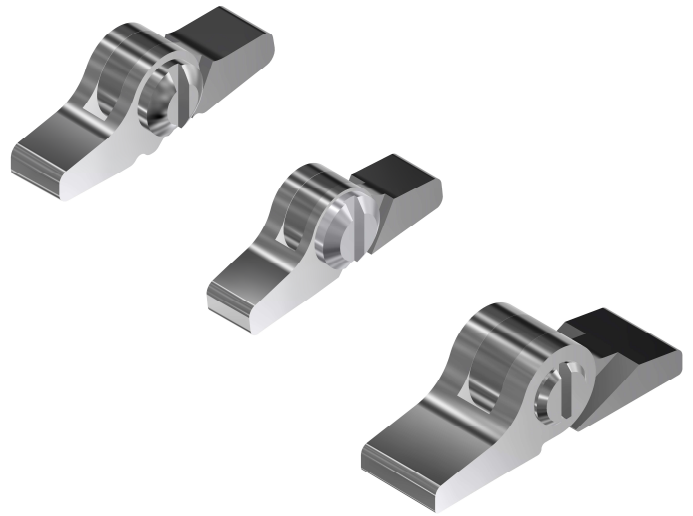


Regular hinges

Stainless Steel

REGULAR HINGES

- High resistant stainless steel hinges
- Ideal for thin and flat templates
- Optionally in 1.5mm, 2.1mm and 3.0mm width available
- For soldering or welding
- Available assembled with screw or loose
- Available either with minus or plus-minus screw
- Optionally with Safety screw



Profile: A	soldering		Profile: B	welding		Profile: C	soldering	
Matching parts								
Art.No.	51-44520	50-44530	51-44015	50-44030	51-44534	50-44534	51-44526	51-44511
Profile	A	B	A	B	A	B	C	C
Width	1.5	1.5	1.5	1.5	2.1	2.1	3.0	3.0
Slot	0.7	0.7	0.7	0.7	0.9	0.9	1.2	1.3
Screw head Ø	1.8	1.8	1.8	1.8	1.8	1.8	2.0	2.0
Screws	99-02001	99-02001	99-01915	99-01915	99-01592 99-01850	99-01592 99-01850	99-01524	99-01813 99-02501

