

ISS Screws

FOR HINGES



**Safety Screws for smooth and
excellent hinge movement**



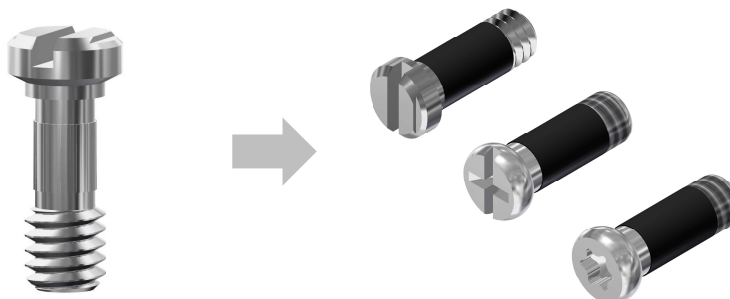
ACCESSORIES

ISS Screws

FOR HINGES

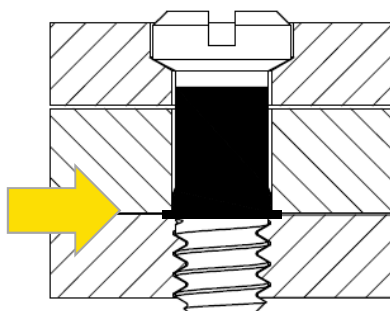
The product

ISS screws from OBE are overmoulded with a high temperature resistant polyamid. This plastic coating provides an optimum and long lasting functionality on **non** spring hinge frames.



The Functionality

When tightening the screw the plastic attached to the pitch of the screw is slightly compressed and fills the gap between the screw and the drilled hole.

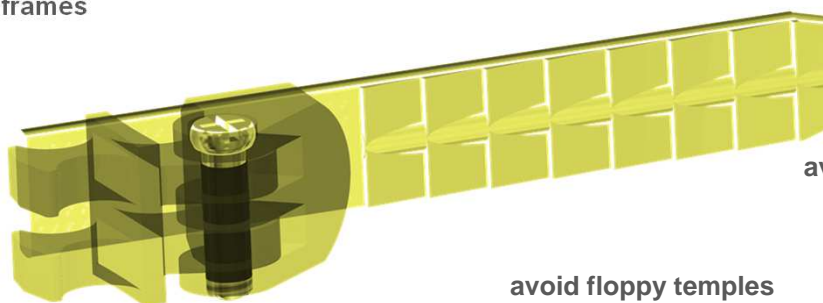


The benefit

smooth and excellent movement

avoid losing the screws

durable lifetime of frames



avoid headache combining different materials

avoid floppy templates



90% of the recycled plastic sprues are used for injection of new safety screws

ISS Screws

FOR HINGES

The collection

ISS screws for hinges are available in a variety of lengths and torques in M1.2 and M1.4 thread.

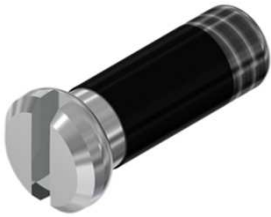
6 point star screw

OBE No.	Thread	Total length	Shaft length	Head Ø
99-04324	M1.4	3.4	2.7	2.0
99-04327	M1.4	4.5	3.5	2.0
99-04333	M1.4	5.0	4.3	2.0



Minus screw

OBE No.	Thread	Total length	Shaft length	Head Ø
99-01592	M1.2	2.6	2.1	1.8
99-01591	M1.2	3.1	2.5	1.8
99-01505	M1.4	2.7	2.2	1.8
99-01510	M1.4	3.0	2.4	2.0
99-01522	M1.4	3.3	2.6	2.0
99-01511	M1.4	3.3	2.7	1.8
99-01524	M1.4	3.5	2.8	2.0
99-01528	M1.4	3.6	3.0	2.5
99-01525	M1.4	4.0	3.3	2.0
99-01517	M1.4	4.1	3.4	2.5
99-01527	M1.4	4.5	3.8	2.0
99-01577	M1.4	4.6	4.0	2.5
99-01533	M1.4	5.0	4.3	2.0
99-01534	M1.4	5.5	4.8	2.0
99-01531	M1.4	5.7	4.9	2.5
99-01579	M1.4	5.9	5.2	2.0
99-01532	M1.4	6.4	5.7	2.0
99-01578	M1.4	7.0	6.3	2.0
99-01580	M1.4	8.5	7.8	2.0
99-01523	M1.6	3.5	2.9	2.5
99-01512	M1.6	3.9	3.3	2.2
99-01526	M1.6	4.0	3.3	2.5
99-01519	M1.6	4.6	3.9	2.5
99-01529	M1.6	5.0	4.3	2.5



Plus-minus screw

OBE No.	Thread	Total length	Shaft length	Head Ø
99-02305	M1.4	2.8	2.2	1.8
99-02310	M1.4	3.0	2.4	2.0
99-02322	M1.4	3.3	2.6	2.0
99-02324	M1.4	3.4	2.7	2.0
99-02328	M1.4	3.5	2.8	2.5
99-02325	M1.4	4.0	3.3	2.0
99-02327	M1.4	4.5	3.8	2.0
99-02379	M1.4	4.6	3.9	2.0
99-02333	M1.4	5.0	4.3	2.0
99-02334	M1.4	5.5	4.8	2.0
99-02331	M1.4	5.7	4.9	2.5
99-02374	M1.4	5.8	5.1	2.0
99-02332	M1.4	6.4	5.7	2.0
99-02376	M1.4	6.9	6.2	2.0
99-02380	M1.4	8.5	7.8	2.0
99-02319	M1.6	4.5	3.8	2.5





OBE GmbH & Co. KG · Turnstr. 22 · 75228 Ispringen · Germany
Tel. +49 7231 802-0 · www.obe.de · info@obe.de