

Space Screws

ISS TECHNOLOGY

PATENTED



**New Safety Screws for hinges with
more function and better comfort**



ACCESSORIES

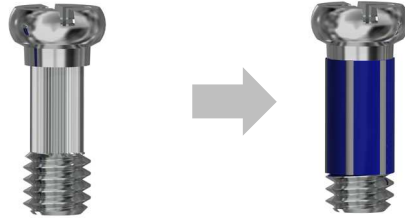
Space Screws

ISS TECHNOLOGY

The product

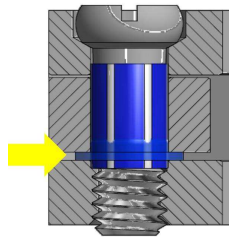
The new SPACE SCREWS from OBE are overmoulded with a high temperature resistant polyamid. This plastic coating provides an optimum and long lasting functionality on frames with regular hinges.

- Now also suitable for hinges with up to 7 barrels
- Now works even when combining different materials



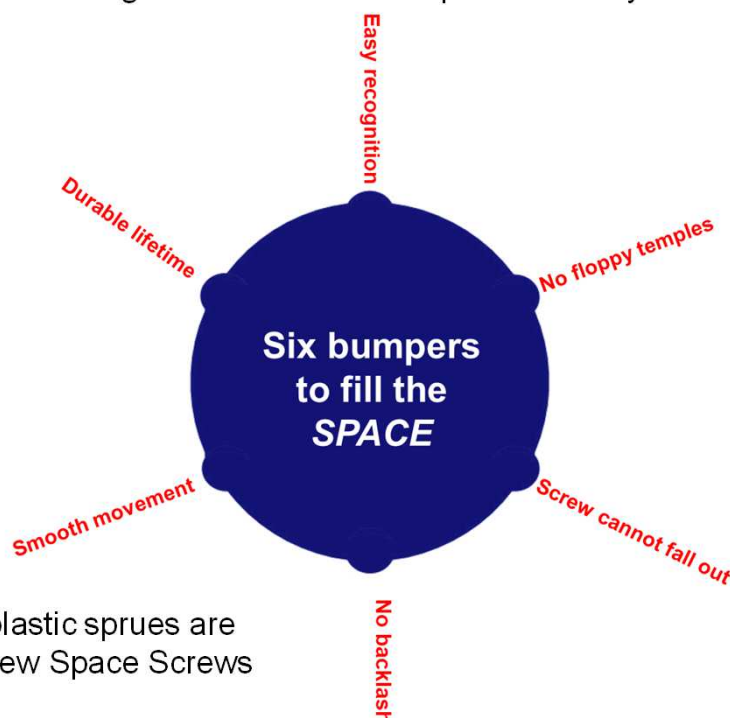
The Functionality

In the assembling process the polyamide is pushed backwards. This compression reduces the play between the screw and the screw hole. The result is a long-term smooth movement effect. As a result Space Screws provide an anti loosening & anti losing effect as they always remain in perfect position.



The speciality

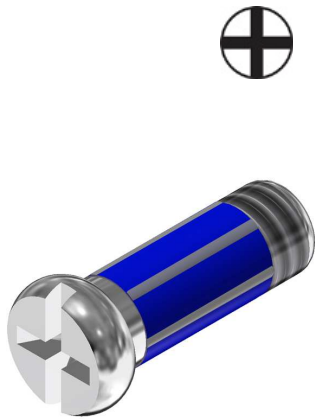
A distinctive feature of the Space Screws are 6 embossed bumpers on the circumference of the plastic which provide an extra tolerance compensation along the length of the shaft. As a result not only small hinges but also wide multibarrel hinges achieve the same positive safety effect.



90% of the recycled plastic sprues are used for injection of new Space Screws

The collection

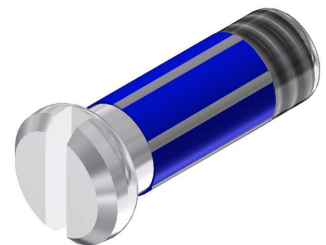
Space screws are available in a variety of lengths always with a M1.4 thread.



Plus-minus screw				
OBE No.	Thread	Total length	Shaft length	Head Ø
99-02305.600.00	M1.4	2.8	2.2	1.8
99-02310.600.00	M1.4	3.0	2.4	2.0
99-02322.600.00	M1.4	3.2	2.6	2.0
99-02324.600.00	M1.4	3.4	2.7	2.0
99-02328.600.00	M1.4	3.5	2.8	2.5
99-02393.600.00	M1.4	3.6	3.0	2.0
99-02325.600.00	M1.4	4.0	3.3	2.0
99-02301.600.00	M1.4	4.3	3.6	2.0
99-02327.600.00	M1.4	4.5	3.8	2.0
99-02379.600.00	M1.4	4.6	3.9	2.0
99-02333.600.00	M1.4	5.0	4.3	2.0
99-02334.600.00	M1.4	5.5	4.8	2.0
99-02374.600.00	M1.4	5.8	5.1	2.0
99-02356.600.00	M1.4	6.1	5.4	2.0
99-02332.600.00	M1.4	6.4	5.7	2.0
99-02376.600.00	M1.4	6.9	6.2	2.0
99-02380.600.00	M1.4	8.5	7.8	2.0

Minus screw

OBE No.	Thread	Total length	Shaft length	Head Ø
99-05305.600.00	M1.4	2.8	2.2	1.8
99-05310.600.00	M1.4	3.0	2.4	2.0
99-05322.600.00	M1.4	3.2	2.6	2.0
99-05324.600.00	M1.4	3.4	2.7	2.0
99-05328.600.00	M1.4	3.5	2.8	2.5
99-05325.600.00	M1.4	4.0	3.3	2.0
99-05301.600.00	M1.4	4.3	3.6	2.0
99-05327.600.00	M1.4	4.5	3.8	2.0
99-05333.600.00	M1.4	5.0	4.3	2.0
99-05334.600.00	M1.4	5.5	4.8	2.0
99-05331.600.00	M1.4	5.7	4.9	2.5
99-05332.600.00	M1.4	6.4	5.7	2.0
99-05380.600.00	M1.4	8.5	7.8	2.0





OBE GmbH & Co. KG · Turnstr. 22 · 75228 Ispringen · Germany
Tel. +49 7231 802-0 · www.obe.de · info@obe.de