

ISS Screws

FOR HINGES



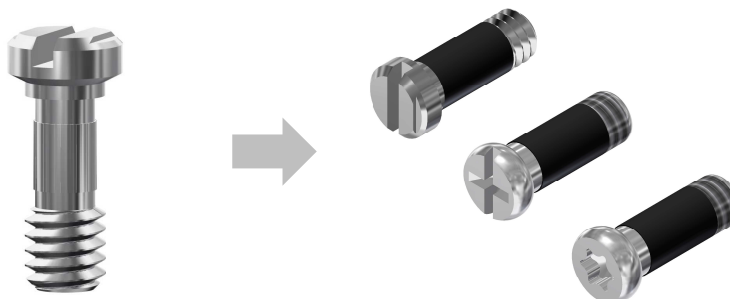
**Safety Screws for smooth and
excellent hinge movement**

ISS Screws

FOR HINGES

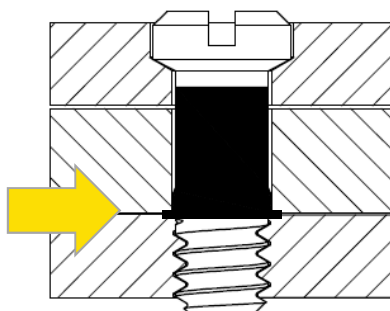
The product

ISS screws from OBE are overmoulded with a high temperature resistant polyamid. This plastic coating provides an optimum and long lasting functionality on **non** spring hinge frames.



The Functionality

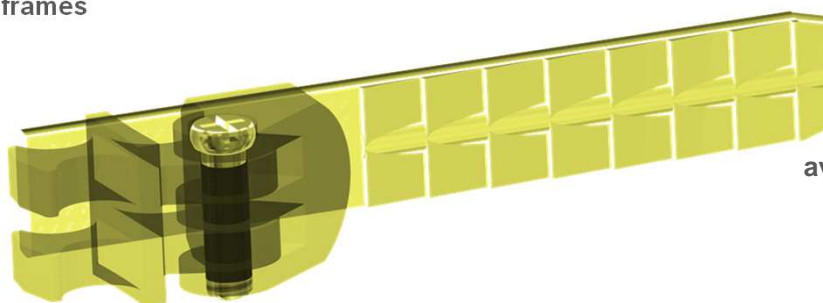
When tightening the screw the plastic attached to the pitch of the screw is slightly compressed and fills the gap between the screw and the drilled hole.



The benefit

smooth and excellent movement

durable lifetime of frames



avoid headache combining different materials

avoid floppy temples

avoid losing the screws

ISS Screws

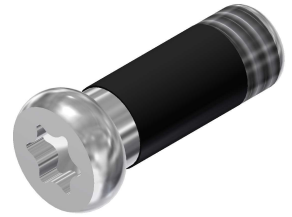
FOR HINGES

The collection

ISS screws for hinges are available in a variety of lengths and torques in M1.2 and M1.4 thread.

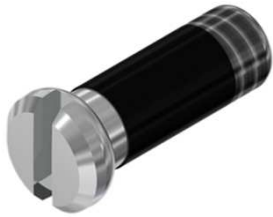
6 point star screw

| OBE No. | Thread | Total length | Shaft length | Head Ø |
|----------|--------|--------------|--------------|--------|
| 99-04324 | M1.4 | 3.4 | 2.7 | 2.0 |
| 99-04327 | M1.4 | 4.5 | 3.5 | 2.0 |
| 99-04333 | M1.4 | 5.0 | 4.3 | 2.0 |



Minus screw

| OBE No. | Thread | Total length | Shaft length | Head Ø |
|----------|--------|--------------|--------------|--------|
| 99-01592 | M1.2 | 2.6 | 2.1 | 1.8 |
| 99-01591 | M1.2 | 3.1 | 2.5 | 1.8 |
| 99-01505 | M1.4 | 2.7 | 2.2 | 1.8 |
| 99-01510 | M1.4 | 3.0 | 2.4 | 2.0 |
| 99-01522 | M1.4 | 3.3 | 2.6 | 2.0 |
| 99-01511 | M1.4 | 3.3 | 2.7 | 1.8 |
| 99-01524 | M1.4 | 3.5 | 2.8 | 2.0 |
| 99-01528 | M1.4 | 3.6 | 3.0 | 2.5 |
| 99-01525 | M1.4 | 4.0 | 3.3 | 2.0 |
| 99-01517 | M1.4 | 4.1 | 3.4 | 2.5 |
| 99-01527 | M1.4 | 4.5 | 3.8 | 2.0 |
| 99-01577 | M1.4 | 4.6 | 4.0 | 2.5 |
| 99-01533 | M1.4 | 5.0 | 4.3 | 2.0 |
| 99-01534 | M1.4 | 5.5 | 4.8 | 2.0 |
| 99-01531 | M1.4 | 5.7 | 4.9 | 2.5 |
| 99-01579 | M1.4 | 5.9 | 5.2 | 2.0 |
| 99-01532 | M1.4 | 6.4 | 5.7 | 2.0 |
| 99-01578 | M1.4 | 7.0 | 6.3 | 2.0 |
| 99-01580 | M1.4 | 8.5 | 7.8 | 2.0 |
| 99-01523 | M1.6 | 3.5 | 2.9 | 2.5 |
| 99-01512 | M1.6 | 3.9 | 3.3 | 2.2 |
| 99-01526 | M1.6 | 4.0 | 3.3 | 2.5 |
| 99-01519 | M1.6 | 4.6 | 3.9 | 2.5 |
| 99-01529 | M1.6 | 5.0 | 4.3 | 2.5 |



Plus-minus screw

| OBE No. | Thread | Total length | Shaft length | Head Ø |
|----------|--------|--------------|--------------|--------|
| 99-02305 | M1.4 | 2.8 | 2.2 | 1.8 |
| 99-02310 | M1.4 | 3.0 | 2.4 | 2.0 |
| 99-02322 | M1.4 | 3.3 | 2.6 | 2.0 |
| 99-02324 | M1.4 | 3.4 | 2.7 | 2.0 |
| 99-02328 | M1.4 | 3.5 | 2.8 | 2.5 |
| 99-02325 | M1.4 | 4.0 | 3.3 | 2.0 |
| 99-02327 | M1.4 | 4.5 | 3.8 | 2.0 |
| 99-02379 | M1.4 | 4.6 | 3.9 | 2.0 |
| 99-02333 | M1.4 | 5.0 | 4.3 | 2.0 |
| 99-02334 | M1.4 | 5.5 | 4.8 | 2.0 |
| 99-02331 | M1.4 | 5.7 | 4.9 | 2.5 |
| 99-02374 | M1.4 | 5.8 | 5.1 | 2.0 |
| 99-02332 | M1.4 | 6.4 | 5.7 | 2.0 |
| 99-02376 | M1.4 | 6.9 | 6.2 | 2.0 |
| 99-02380 | M1.4 | 8.5 | 7.8 | 2.0 |
| 99-02319 | M1.6 | 4.5 | 3.8 | 2.5 |





OBE GmbH & Co. KG · Turnstr. 22 · 75228 Ispringen · Germany
Tel. +49 7231 802-0 · www.obe.de · info@obe.de